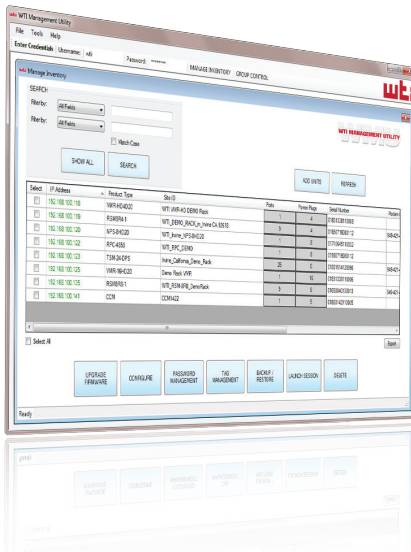




# WTI Enterprise Software WMU Series



## WTI MANAGEMENT UTILITY

### Console & Power Management for the Enterprise

The WTI Management Utility allows network administrators to access, control and manage multiple WTI devices across complex networks via a single, centralized interface. Upgrading firmware, changing usernames/passwords, organizing and locating units is a cinch with this enterprise management solution.

#### Multi-device Management

- Easily Discover WTI Devices on your Network
- Upgrade Firmware to all or Select Units
- Edit Usernames & Passwords
- Search by Device, Outlets, Ports or Port Groups
- View Alarm Status across all Units
- Assign Descriptive Tags to Simplify Identification of Specific WTI Devices
- Group WTI Devices by Location, Function or other Criteria

#### Accessibility & Control

- Reboot Power on Locked Devices
- Access Console Ports across your Network
- Identify Units, Ports, Outlets & Groups
- Launch Web & SSH Sessions via LAN or Dial-Up with a Single Click
- Proxy Server Support
- Export Management Data
- Port Forwarding Recognition for Compatibility with 3G/4G/LTE Cellular Routers

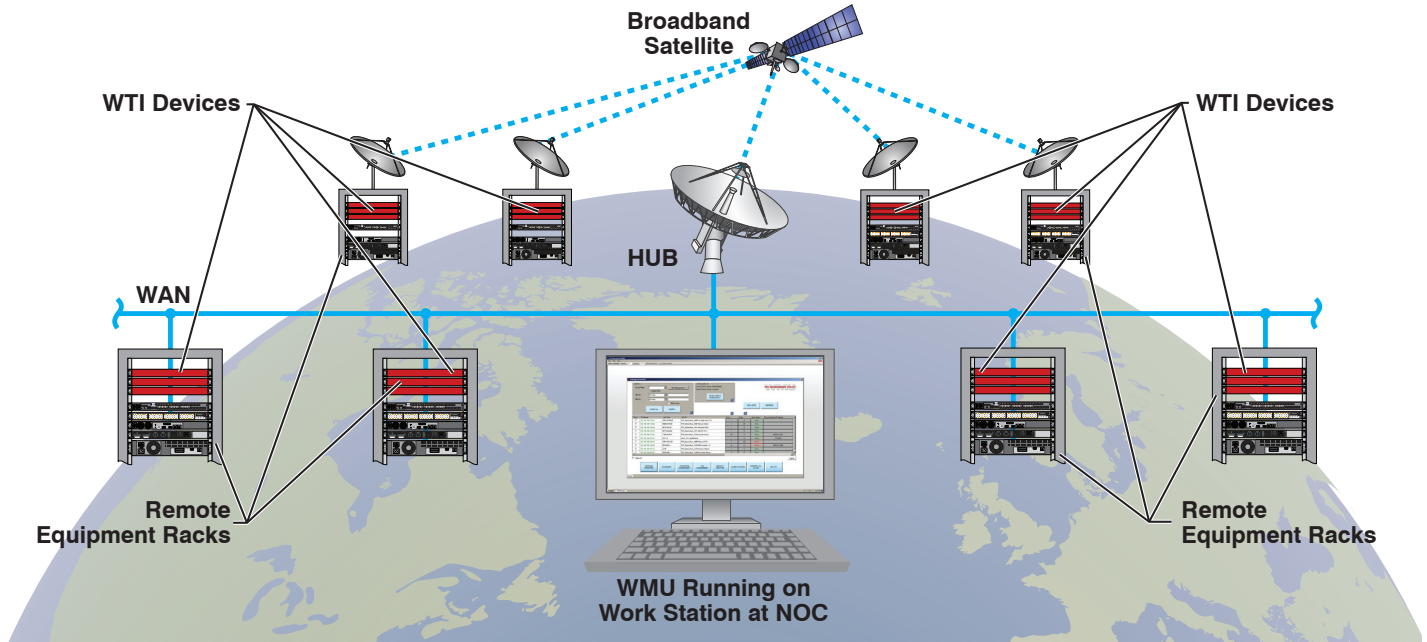
#### Requirements

- Windows XP and above
- Microsoft .Net Framework 3.5 or higher
- Firmware V6.23 or higher (TSM/RSM)
- Firmware V1.48 or higher (VMR/NPS/NBB/RPC/CCM)

#### Top Five Features:

- **Reboot Network Elements:** Reboot or switch power to multiple network elements connected to WTI power products at different equipment sites without the need to log into each individual WTI Switched PDU.
- **Access Console Ports:** Quick access via SSH, Web or Dial-up to console port command functions on multiple routers, switches and other network elements connected to WTI console server products on your LAN/WAN.
- **Edit Usernames and Passwords:** Update user account information on multiple WTI devices from a single, convenient interface.
- **Upgrade Firmware:** Administrators can select WTI devices from the WMU inventory screen, specify the desired firmware update file and the WMU will do the rest of the work, updating each selected unit.
- **Asset Tagging:** Assign descriptive tags to each WTI unit in WMU inventory to simplify the task of locating devices with similar locations or characteristics. After tags are assigned, search functions can be used to quickly find a specific device or series of devices.

# Enterprise Console & Power Management



### Centralized Out-of-Band Management

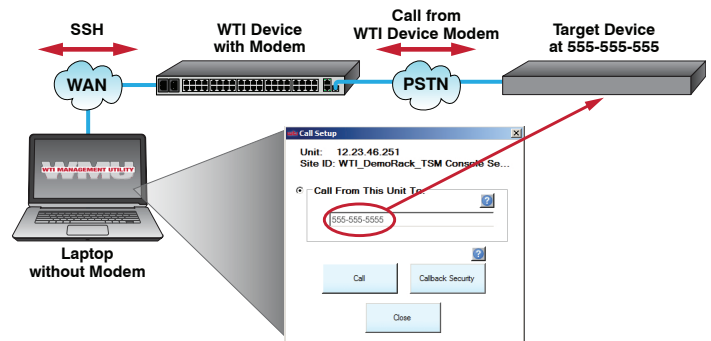
The WMU provides network support personnel with a comprehensive, centralized interface that can be used to manage a wide array of WTI devices spread across an enterprise LAN/WAN. Rather than addressing each WTI device individually, the WMU allows network administrators to coordinate console access and power control functions for large numbers of WTI devices regardless of where those devices might be located.

Powerful device grouping and search capabilities provide technicians with the ability to quickly identify and access specific WTI devices within a large network infrastructure, drastically speeding and simplifying the process of locating specific WTI units when they are needed.

Connecting to WTI devices is also simple and easy with the WMU. A single click quickly establishes a Web or SSH session via LAN, WAN or dial-up.

### Use Internal Modems on WTI Devices

If your laptop or tablet doesn't have a modem of its own, the WMU can create an SSH connection to a selected WTI device and then use the WTI device's internal modem to dial a user-defined phone number as shown in the example below. This essentially allows administrators to "share" the internal modem of a remote WTI device in order to access other network elements via dial-up.



# Enterprise Console & Power Management