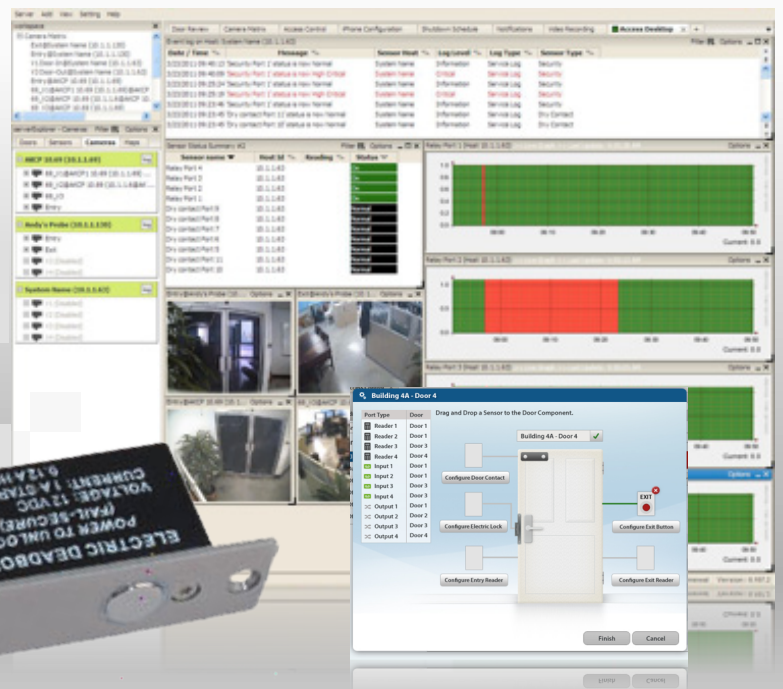


## Fail Safe Electric Bolt ( Magnetic ) - ACDL07



## Fail Safe Electric Bolt ( Magnetic )

A sturdy electronic bolt lock with a built in magnetic Fail Safe system. This magnetic fail safe system meets the demands of security professionals, and the most rigorous building and fire regulations and safety codes in the world.

With its proven 500,000 cycles this door bolt is Ideal for high traffic access doors and sites. This lock is compatible with the AKCess Pro Server application when used in conjunction with our Door Control Unit.



Suitable for wooden, glass or metal doors.



Made from high strength steel with smooth finish.



Fail Safe system ensures safe exit in an emergency.



Ideal for Fire Door Access Control.

## Technical Specifications

**Face Plate (mm) :** 205L x 30W x 40H

**Strike size (mm) :** 100L x 35W x 3W

**Bolt size :** 16mm diameter stainless steel with 16mm throw

**Voltage :** DC12V

**Start Current :** 950mA

**Standby Current :** 150mA

**Holding Force :** up to 2000Kg

**Auto-lock Time Delay :** 0,3,6,9sec.

**Signal Output :** Door status Output, NC/COM

**Induction Distance :** 8mm

**Operating Temperature :** -10~+25C (14-131F)

**Operating Humidity :** 0~90%(non-condensing)

**Weight :** 1kg