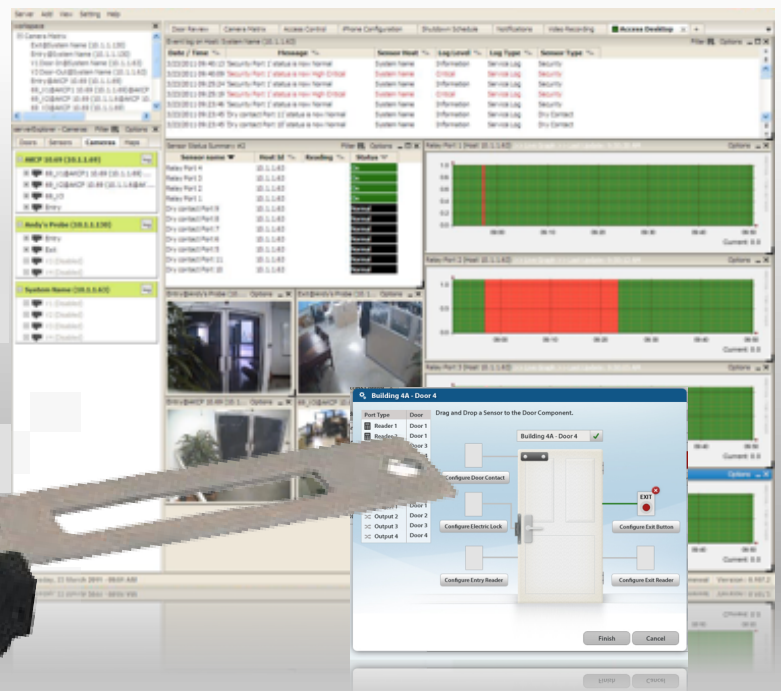


Electronic Strike Plate (Fail Secure) - ACDL05



Electronic Strike Plate (Fail Secure)

This Electronic Strike Plate is the European “Long” type variety. It works perfectly with our electronic door locks and is compatible with the AKCess Pro Server application when used in conjunction with our Door Control Unit.

A robust design that is made from stainless steel ensures peace of mind for your Access Control needs. This is especially the case when used with our heavy duty door locks.



Suitable for: wooden, metal and PVC Doors



Finished in Aluminum.



Fail safe ensures safe exit in an emergency.



Proven 500,000 cycles. Ideal for high traffic sites.

Technical Specifications

Dimensions (mm) : 250L x 32W x 33H

Holding Force : Up to 800kg

Voltage : DC12V(DC24V)

Current : DC12V/250mA DC24V/150mA

Surface Temperature : Within +20C

Suitable Temperature : -10C~+25C(14-131F)

Function : Built-out MOV

Weight : 0.4kg