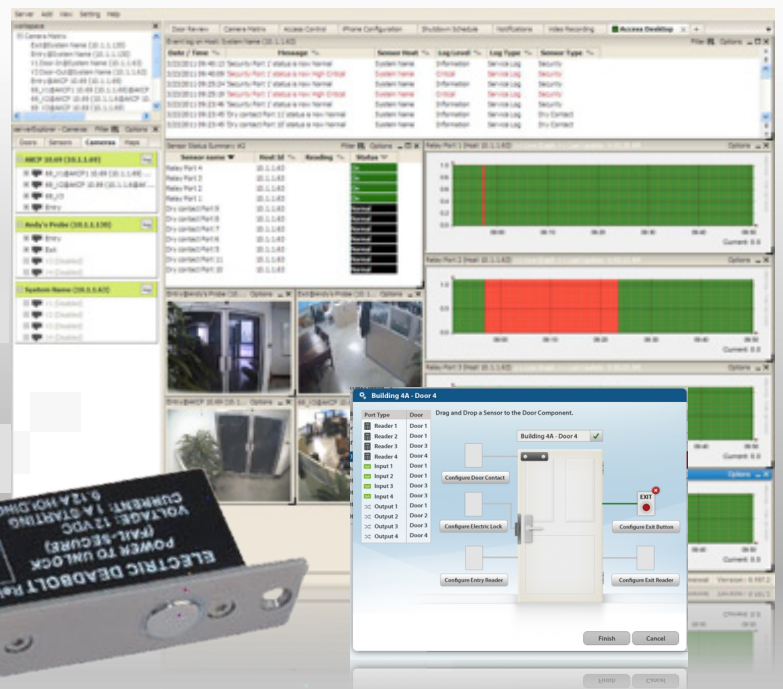


Fail Safe Electronic Bolt (Magnetic + Timer) - ACDL04



Fail Safe Electronic Bolt (Magnetic + Timer)

A sturdy electronic bolt lock with a built-in magnetic Fail Safe system. This magnetic fail safe system meets the demands of security professionals, and the most rigorous building and fire regulations and safety codes in the world.

In addition, an auto-lock time delay feature helps to regulate access and can be set up using the AKAccess Pro Server software via the AKCP Door Control Unit. With its proven 500,000 cycles this door bolt is Ideal for high traffic access doors and sites.



Suitable for wooden, glass or metal doors



Finished in Aluminum.



Fail safe ensures safe exit in an emergency.



Proven 500,000 cycles. Ideal for high traffic sites.

Technical Specifications

Face plate size(mm) : 205L x 35W x 40H

Bolt : 16mm Diameter, Stainless Steel 16mm Throw

Voltage : DC12V

Start Current : 900mA

Standby Current : 150mA

Holding Force : up to 800Kg

Signal Output : Door status Output, NC/COM

Surface Temperature : Low Temperature

Induction Distance : 8mm

Operating Temperature : -10~+25C (14-131F)

Operating Humidity : 0~90% (non-condensing)

Weight : 0.7kg