



Intelligent Alarms



800A Units

Single input models

801A: Universal temperature input (thermocouple, RTD, or DC millivolts);
One DPDT relay or two SPDT relays

811A: DC voltage/current* input;
One DPDT relay or two SPDT relays

Dual input models

812A: DC voltage/current* inputs;
Two SPDT relays

822A: Thermocouple inputs;
Two SPDT relays

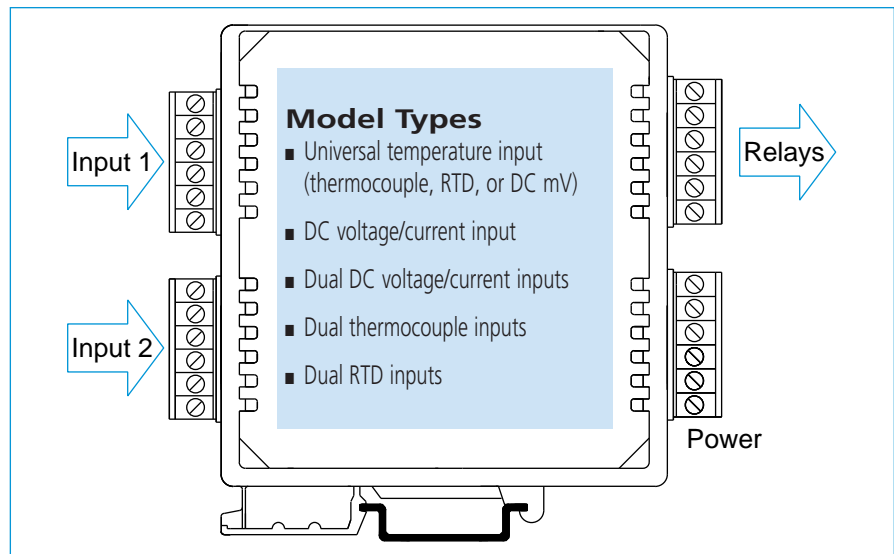
832A: RTD inputs;
Two SPDT relays

* AC current sensor option available.

IntelliPack alarms compare inputs against user-defined limit setpoints to control built-in relays.

Each unit offers a selection of input ranges and alarm functions to handle a broad range of applications. As your needs change, you can easily reconfigure the unit for different ranges or functions. Alarm functions available on all models include on/off controller, limit alarm, window alarm, deviation alarm, rate-of-change alarm, and peak/valley detection. Other functions are also possible; please consult the factory.

Setup is very easy. IntelliPack alarms are configured through a user-friendly Windows 95/98/NT program. Field adjustments and recalibration are quickly performed with front-panel push-buttons and status LEDs. Once configured, IntelliPacks operate independent of any host computer.



Special Features

General Operation

- Advanced microcontroller has integrated, downloadable flash memory and EEPROM for intelligent signal processing.
- Windows XP/Vista/7 software configuration speeds setup and replacement.
- Push-button reprogrammability facilitates changes in the field without a host PC.
- Plug-in terminal blocks make module installation and removal easy.
- Built-in self-diagnostic routines operate upon power-up and during operation for easy maintenance and troubleshooting.
- 3-way isolation separates inputs, power, and relay contacts from each other.
- EMC compliant. Ruggedized circuitry meets directives to provide increased transient immunity and low emissions.
- Wide ambient temperature range ensures reliable performance from -25 to 70°C.
- Wide DC supply range with diode-coupled reverse polarity protection is useful for redundant supplies and battery backup.

Alarm Operation

- Multi-purpose inputs accept numerous ranges to reduce spare stock requirements.
- User-programmable alarm operation lets you select or change alarm functions (see next page for supported functions).
- Dual alarm operation lets you perform two alarm functions at the same time.
- High-resolution Sigma-Delta A/D converter delivers high accuracy with low noise.
- Input excitation supply on each input provides power for a two-wire transmitter.
- High-power relays switch voltages up to 230V AC at 5A.
- User-programmable deadband (100%) on each setpoint eliminates relay chatter and prolongs contact life.
- User-programmable relay reset enables automatic alarm reset or latching alarm with manual reset.
- Failsafe/non-failsafe operation lets you set the default relay position.
- Relay delay feature lets you set the reaction time to filter transients.
- Thermocouple and RTD signal processing performs linearization, up/downscale break detection, reference-junction compensation and other functions.



Alarm functions

Each IntelliPack alarm unit includes all the alarm functions listed below. Acromag's configuration software helps you quickly define or modify the relay operation for your application. Unique, fill-in-the-blank screens are provided for each alarm type.

Limit Alarm

Limit alarms monitor a single setpoint (high or low) for an alarm condition. The relay enters the alarm state when the input signal exceeds the setpoint for a user-defined time period. This time period helps filter input transients. The relay remains in the alarm state until the input signal retreats past the setpoint and any applied deadband.

Window (Band-Pass) Alarm

Window alarms use two setpoints to monitor for an alarm condition. This allows both a high and low setpoint to be defined for a single input signal. The two setpoints define a minimum/maximum operating range or a window. This function is commonly referred to as a Window, Guard, or Band-Pass alarm.

The relay enters the alarm state when the input level rises or falls outside the window for a user-defined time period (to filter input transients). The relay remains in the alarm state until the input retreats back into the window, plus any applied deadband.

On/Off Controller

An on/off controller uses two setpoints to toggle a relay. No deadband is applied. This alarm type is often used for level control applications, such as filling or emptying a container (pump/valve control).

The relay enters the alarm state when the input exceeds the "on" setpoint for a user-defined time period. The relay remains in the alarm state until the input signal retreats past the "off" setpoint.

Deviation Alarm (Dual Input Models Only)

The deviation alarm generates an alarm condition based on the difference between two input signals. One signal serves as the reference input. The second input signal is monitored for a user-defined deviation value (positive, negative, or absolute) with respect to the reference input. This alarm type is useful for controlling temperature and flow.

The relay enters the alarm state when the deviation exceeds the limit for a user-defined time period. The relay remains in the alarm state until the deviation decreases below the limit, plus any applied deadband.

Peak/Valley Detection Alarm

This function detects when the input signal reaches a maximum (peak) or minimum (valley) value. Peak/valley alarms are useful for torque and pressure testing applications as well as for monitoring temperature and chemical reactions.

The detection function activates only after the input exceeds a user-defined threshold level. Once activated, the alarm unit monitors the input signal for a decrease on a rising signal or an increase on a falling signal. A relay trips when the signal exceeds a user-defined deadband following the peak/valley. The relay remains in alarm state until the signal reaches a user-defined dropout value.

Rate-of-Change

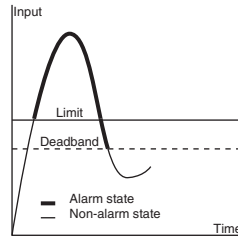
This function monitors an input for a change in value with respect to time. IntelliPacks monitor absolute rate-of-change and can activate for increasing or decreasing rates.

The relay enters alarm state when the input rate-of-change exceeds the user-defined rate limit for a one second time period. The relay remains in the alarm state until the rate-of-change moves past a specified dropout level for a one second time period.

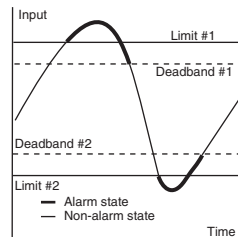
Other Alarm Functions

Internal intelligence and downloadable flash memory allow IntelliPacks to perform many other functions. If your application differs from the standard alarms above, please call the factory regarding the possibility of other functions custom-tailored to your needs.

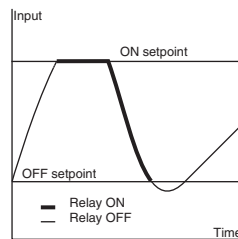
Limit Alarm



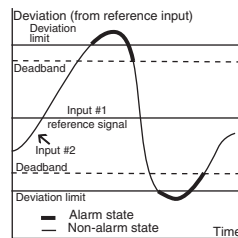
Window Alarm



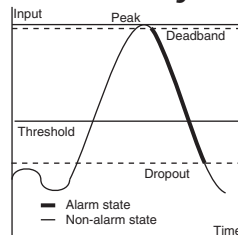
On/Off Controller



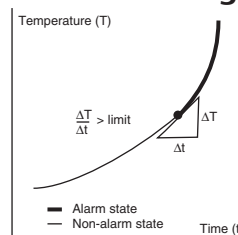
Deviation Alarm



Peak/valley Detector



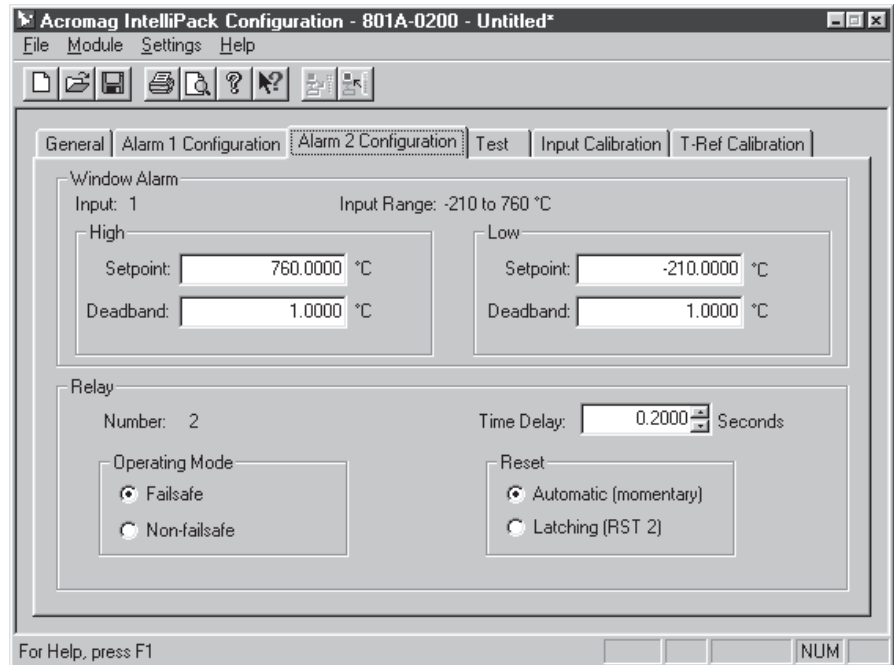
Rate of Change Alarm





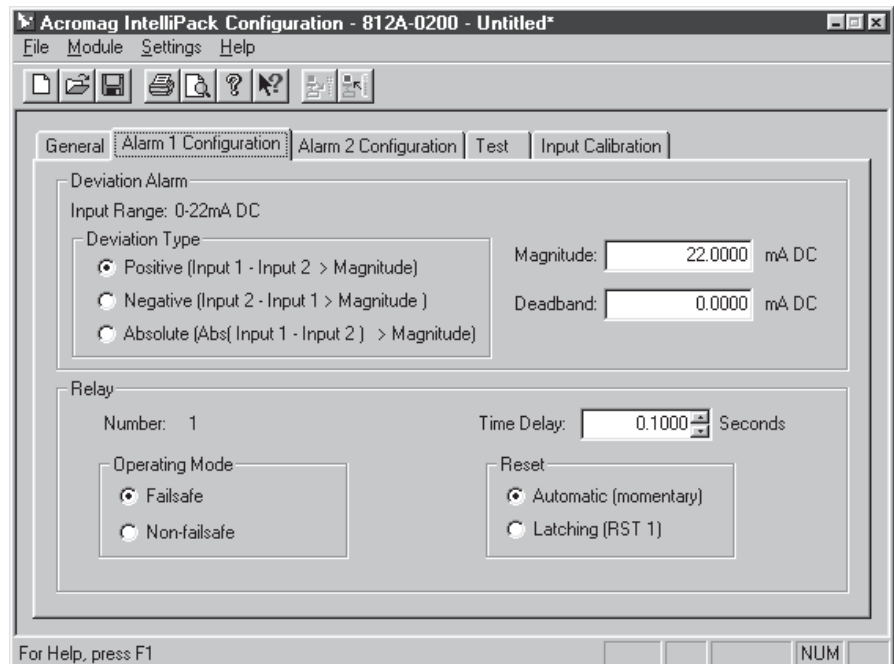
Software Configuration Examples

Limit Alarms, Window Alarms, and On/Off Controllers

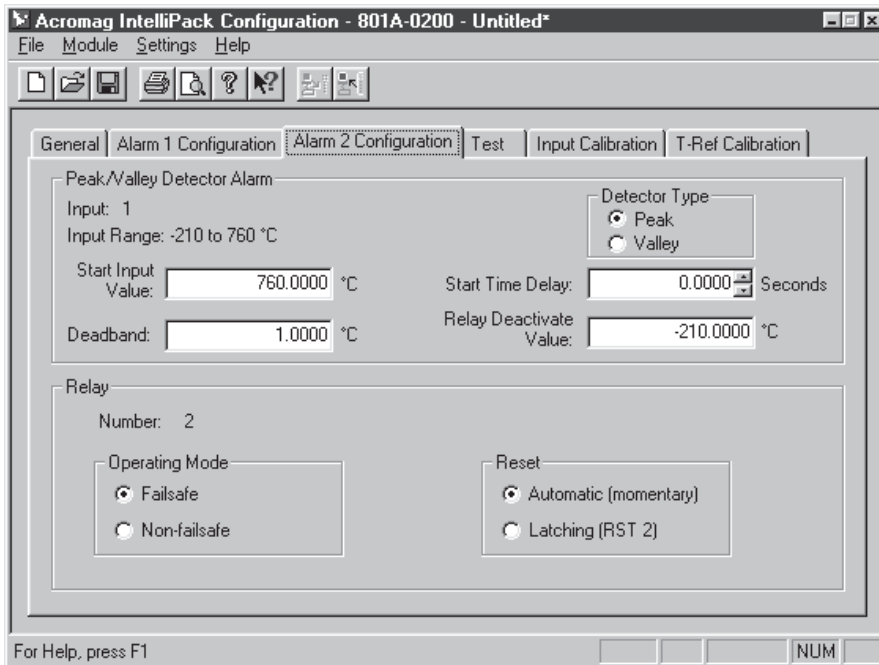


A property sheet to configure a window alarm. Limit alarms and on/off controllers are similar. Typical applications: pump control, early warning alert, safety shutdown.

Deviation Alarms

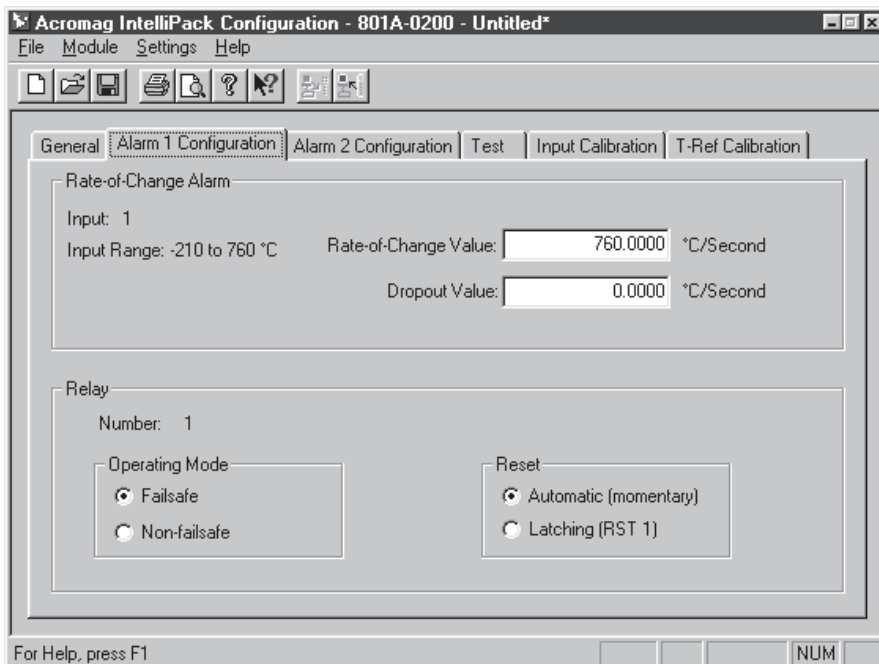


A property sheet to configure a deviation alarm. Positive, negative, and absolute deviation alarms are supported. Typical applications: speed tracking/monitoring, consistent batch temperature measurement, flow leak detection.



Peak/Valley Alarms

A property sheet to configure a peak/valley alarm.
Typical applications: force measurement, pressure testing, chemical mixing.



Rate-of-Change Alarms

A property sheet to configure a rate-of-change alarm.
Typical applications: injection molding, speed sensing, monitoring chemical reactions