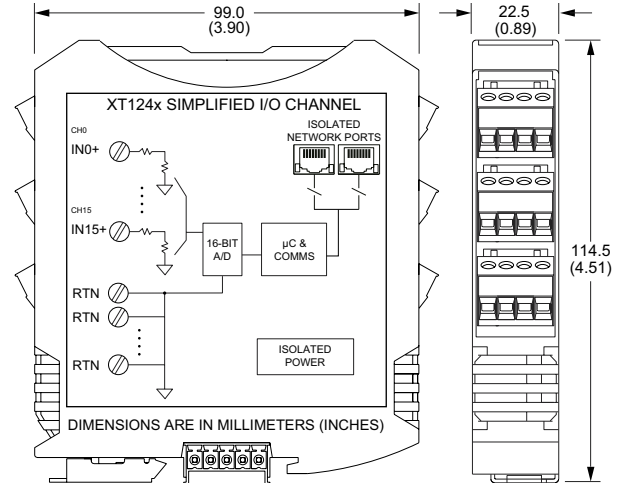
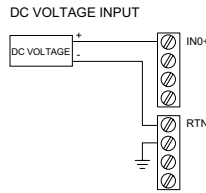


Ethernet I/O: BusWorks® XT Series

XT1240 Ethernet Analog Input Modules



EXAMPLE INPUT CONNECTIONS



16-channel single-ended analog voltage input ♦ Modbus TCP/IP, Ethernet/IP, Profinet, or i2o communication

Description

The XT1240 offers an isolated Ethernet network interface for up to sixteen single-ended current input channels. Single-ended inputs enable a higher channel density to save space and a lower cost per channel.

Rugged construction, high density design, and easy USB-to-PC/Windows setup combine for a very effective and reliable module. These units are ideal for remote monitoring, distributed control, or SCADA applications.

Input Ranges

DC Voltage:
±5V, ±10V, 0 to 5V, 0 to 10V.

Ethernet Communication

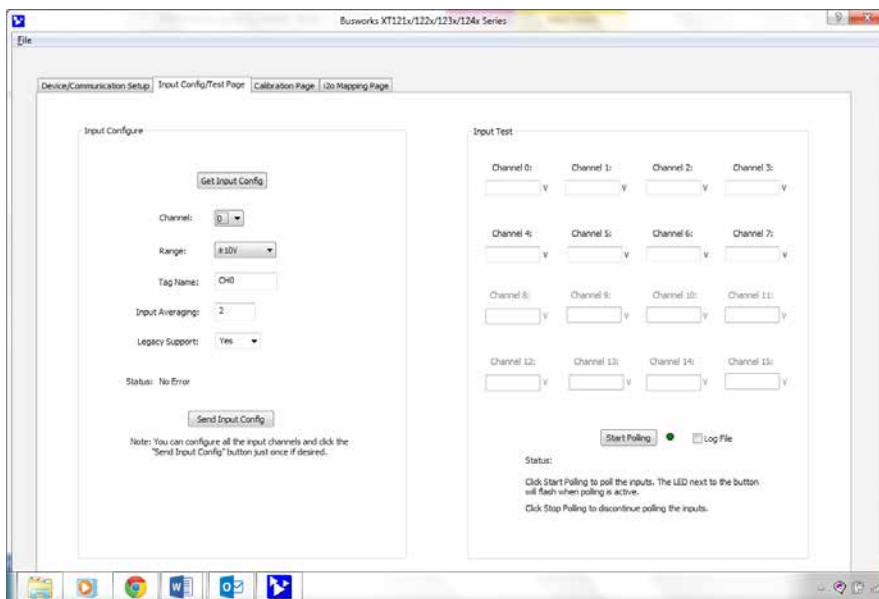
Modbus TCP/IP, Ethernet/IP, Profinet, i2o® peer-to-peer, 10/100Base-T(X) PriorityChannel™ device determinism

Power Requirement

12 to 32V DC (2.8W)

Key Features & Benefits

- Easy setup with Windows software via USB
- High input impedance (100K ohms) reduces loading on voltage loops
- User-configurable sample averaging (1-200) on a per-channel basis
- 10ms network updates for all 16 input channels
- i2o peer-to-peer updates based on percent-of-change and/or timed updates
- High-resolution 16-bit $\Sigma-\Delta$ A/D converter ensures precise, high accuracy measurements
- High-Density 22.5mm wide package with pluggable, front-facing terminals
- Dual Ethernet 10/100 ports (auto-negotiation) reduce switch port requirements
- 1500V AC isolation (between I/O, power, and network ports) and surge/transient protection
- Supports bussed/rail and redundant power
- -40°C to +70°C wide temperature operation
- Withstands 25g shock and 4g vibration
- CE compliant. UL/cUL Class 1 Div 2 Zone 2 approvals (pending)



BusWorks XT software (download free from www.acromag.com) allows you to configure I/O modules offline with USB or save the configuration file and download settings into units later at your convenience.



Tel 248-295-0880 ■ Fax 248-624-9234 ■ sales@acromag.com ■ www.acromag.com ■ 30765 Wixom Rd, Wixom, MI 48393 USA



Ethernet I/O: BusWorks® XT Series

XT1240 Ethernet Analog Input Modules

Performance Specifications

IMPORTANT: To prevent damage or errors from grounded PCs and surges, Acromag strongly recommends use of the USB-ISOLATOR when configuring an XT1000 I/O module.

■ USB Interface

USB Connector

Type: USB Mini-B type socket, 5-pin.
Data rate: 12Mbps. USB v1.1 and 2.0 compatible.
Maximum cable length: 5.0 meters.

USB Transient Protection

Transient voltage suppression on power and data lines.

Driver

Not required. Uses Windows HID drivers.

■ Input

Accuracy

±0.05% of span, typical for nominal input ranges.

Analog to Digital Converter (A/D)

16-bit $\Sigma\text{-}\Delta$ converter. 351.6uV/bit resolution.

Noise Rejection

Better than -110dB @ 60Hz.

Input Filter Bandwidth

-3dB at 25KHz, typical.

Input Conversion Rate

10mS for all 16 input channels.

Input Impedance

105.2K ohms.

■ Ethernet Communication

Protocols

Modbus TCP/IP, i2o peer-to-peer, Ethernet/IP, or Profinet depending on model number.

Ethernet Communication Controller

Innovasic Rapid™ Platform with PriorityChannel™ for determinism at the device regardless of network load.

Modbus TCP/IP (slave)

Port 502 reserved. Supports up to 10 sockets.

i2o Peer-to-Peer (master/slave)

Can map each of 16 analog input channels separately to output channels. Timed (1-65535 sec) or percent-of-change updates. Supports GPRS/GSM systems.

Ethernet/IP (adapter)

Supports 10 connections. EDS file on website.

Profinet (server)

Supports 1 connection. GSDML file on website.

Connectors

Two shielded 8-pin RJ-45 sockets, 10BaseT/100BaseTX.

Wiring

Auto-crossover for MDI or MDI-X.

IP Address

User-configurable. 192.168.1.100 default IP address.

Data Rate

Auto-negotiated, 10Mbps or 100Mbps.

Compliance

IEEE 802.3, 802.3u, 802.3x.

■ Environmental

Operating temperature

-40 to 70°C (-40 to 158°F).

Storage temperature

-40 to 85°C (-40 to 185°F).

Relative humidity

5 to 95% non-condensing.

Power Requirement

12 to 32V DC, 2.8W maximum
(116mA maximum @ 24V).

Isolation

4-way isolation between I/O channels, network (each port), and power.

Peak: 1500V AC, ANSI/ISA-82.01-1988.

Continuous: 250V AC, 354V DC.

Shock and Vibration Immunity

Vibration: 4g, per IEC 60068-2-64.

Shock: 25g, per IEC 60068-2-27.

Electromagnetic Compatibility (EMC) Compliance

Radiated Emissions: BS EN 61000-6-4, CISPR 16.

RFI: BS EN 61000-6-2, IEC 61000-4-3.

Conducted RFI: BS EN 61000-6-2, IEC 61000-4-6.

ESD: BS EN 61000-6-2, IEC 61000-4-2.

EFT: BS EN 61000-6-2, IEC 61000-4-4.

Surge Immunity: BS EN 61000-6-2, IEC 61000-4-5.

Approvals

CE compliant. UL/cUL listing pending.

Designed for Class I; Division 2; Groups ABCD; Zone 2.

■ Physical

General

General purpose plastic enclosure for mounting on 35mm "T-type" DIN rail.

Case Material

Self-extinguishing polyamide, UL94 V-0 rated, color light gray. General purpose NEMA Type 1 enclosure.

Circuit Board

Military grade fire-retardant epoxy glass (IPC-4101/98).

I/O Connectors

Removable plug-in type terminal blocks rated for 12A/250V; AWG #26-12, stranded/solid copper wire.

Dimensions

Width = 22.5mm (0.9 inches), Length = 114.5mm (4.51 inches), Depth = 99.0mm (3.90 inches).

Shipping Weight

0.5 pounds (0.22 Kg) packed.

Ordering Information

◆ Models

XT1241-000

16-channel single-ended voltage input module, Modbus/TCP and i2o protocol.

XT1242-000

16-channel single-ended voltage input module, Ethernet/IP protocol.

XT1243-000

16-channel single-ended voltage input module, Profinet protocol.

◆ Software

XT-SIP (recommend one kit per customer)

Software Interface Package. Includes software (XT-CONFIG), isolator (USB-ISOLATOR), two USB cables (4001-112, 4001-113), Ethernet cable (5035-360).

◆ Accessories

XTBUS-KIT

DIN rail bus power/excitation connector kit. Includes one DIN rail bus connector (1005-070), one left-side female connector terminal block (1005-220) and one right side male connector terminal block (1005-221).

USB-ISOLATOR

USB-to-USB isolator, includes USB cable (4001-112).

PSSR-SD24

Power supply (24V DC, 2.5A).

DIN RAIL 3.0

DIN RAIL 16.7

DIN rail strip, Type T, 3 inches (75mm) or 16.7 (425mm).

20RM-16-DIN

19" rack-mount kit with DIN rail.

ISO9001
AS9100



Tel 248-295-0880 ■ Fax 248-624-9234 ■ sales@acromag.com ■ www.acromag.com ■ 30765 Wixom Rd, Wixom, MI 48393 USA